

Marine & Industry References





Project 32C (2026)

CUSTOMER: JFA Yachts
TYPE: Motor Yacht
TYPE OF WORK: Newbuild
SCOPE OF SUPPLY: Audio-Video / IT Network / NavCom system



Warda 20955 (2026)

CUSTOMER: Heesen Yachts
TYPE: Motor Yacht
TYPE OF WORK: Newbuild
SCOPE OF SUPPLY: Engineering / Electrical Installation / Electrical Switchboards / MPA System (AMCS) / Power Management / Light Management / Audio-Video / IT Network



Solemates (2025)

CUSTOMER: Heesen Yachts
TYPE: Motor Yacht
TYPE OF WORK: Newbuild
SCOPE OF SUPPLY: Engineering / Electrical Installation / Electrical Switchboards / MPA System (AMCS) / Power Management / Light Management / Audio-Video / IT Network



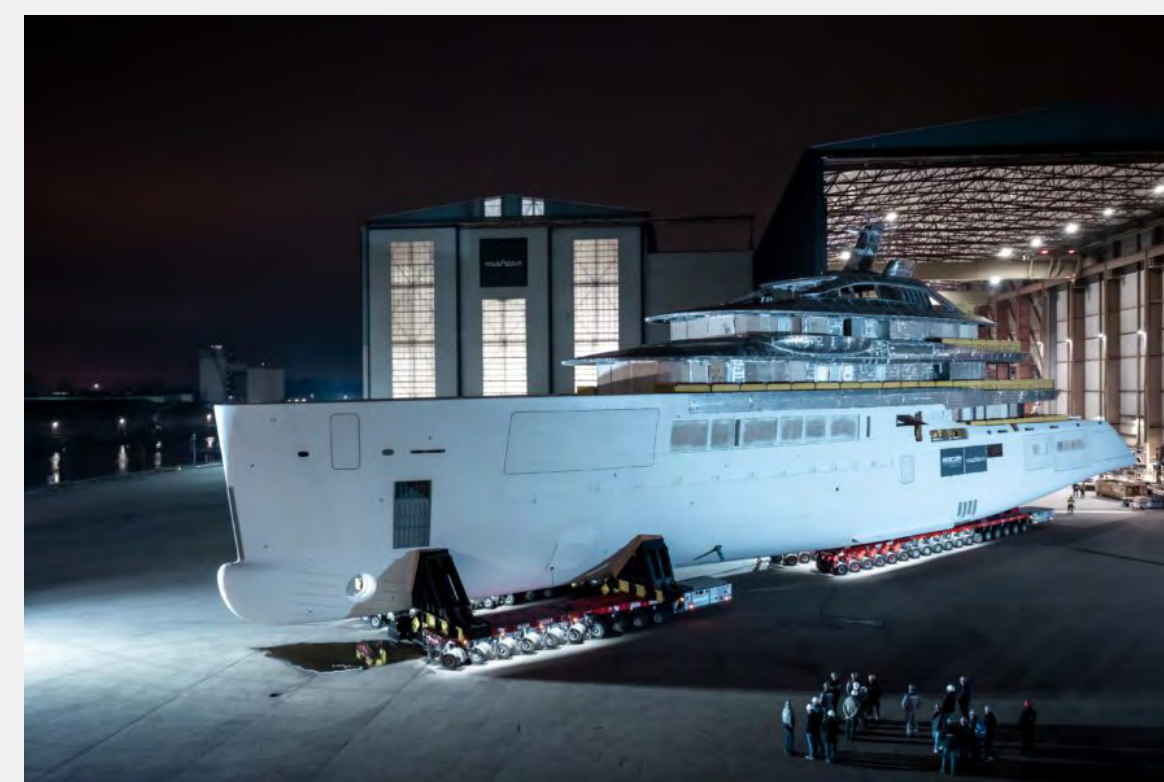
Aquarius II 408 (2025)

CUSTOMER: Royal Huisman
TYPE: Sailing Yacht
TYPE OF WORK: Newbuild
SCOPE OF SUPPLY: NavCom, GMDSS system, Navigation package, instruments package, PBX, Thermal cameras



Ad Astra 205 (2025)

CUSTOMER: Moonen
TYPE: Motor Yacht
TYPE OF WORK: Newbuild
SCOPE OF SUPPLY: NavCom, GDMSS system, Navigation package, IT Network



Y729 (2025)

CUSTOMER: Oceanco
TYPE: Motor Yacht
TYPE OF WORK: Newbuild
SCOPE OF SUPPLY: EMS, hybrid propulsion en DC grid met Ingeteam



Amels 80M (2025)

CUSTOMER: Damen Yachting
TYPE: Yacht
TYPE OF WORK: Newbuild
SCOPE OF SUPPLY: Electrical installation of the steelwork



Serena 20555 (2024)

CUSTOMER: Heesen Yachts
TYPE: Motor Yacht
TYPE OF WORK: Newbuild
SCOPE OF SUPPLY: Engineering / Electrical Installation / Electrical Switchboards / MPA System (AMCS) / Power Management / Light Management / Audio-Video / IT Network



Iris Blue 20255 (2024)

CUSTOMER: Heesen Yachts
TYPE: Motor Yacht
TYPE OF WORK: Newbuild
SCOPE OF SUPPLY: Engineering / Electrical Installation / Electrical Switchboards / MPA System (AMCS) / Power Management / Light Management / Audio-Video / IT Network



Cinderella Noel IV 20150 (2024)

CUSTOMER: Heesen Yachts
TYPE: Motor Yacht
TYPE OF WORK: Newbuild
SCOPE OF SUPPLY: NavCom, GMDSS system, Navigation package / Audio-Video / IT Network



Special One 406 (2024)

CUSTOMER: Royal Huisman
TYPE: Motor Yacht
TYPE OF WORK: Newbuild
SCOPE OF SUPPLY: NavCom, GMDSS system, Navigation package, DP system, Fish sonar systems, Thermal cameras



Lumiere 203 (2024)

CUSTOMER: Moonen
TYPE: Motor Yacht
TYPE OF WORK: Newbuild
SCOPE OF SUPPLY: NavCom, GDMSS system, Navigation package, IT Network



Fair Lady (2024)

CUSTOMER: Royal Huisman
TYPE: Motor Yacht
TYPE OF WORK: Refit
SCOPE OF SUPPLY: NavCom, GMDSS system, Navigation packagee



ALP 21150 (2024)

CUSTOMER: Heesen Yachts
TYPE: Motor Yacht
TYPE OF WORK: Newbuild
SCOPE OF SUPPLY: NavCom, GMDSS system, Navigation package



Amels 60 – Satemi (2024)

CUSTOMER: Damen Yachting
TYPE: Motor Yacht (60m)
TYPE OF WORK: Newbuild
SCOPE OF SUPPLY: System integration, complete e-installation, energy storage, AVIT, alarm & monitoring system, NavCom, hybrid propulsion



Ultra-G 19959 (2023)

CUSTOMER: Heesen Yachts
TYPE: Motor Yacht
TYPE OF WORK: Newbuild
SCOPE OF SUPPLY: NavCom, GMDSS system, Navigation package, Fishfinders, Drone detection system, Glass Bridge, Forward Looking sonar / Audio-Video / IT Network



Stellar VQ80SF (2023)

CUSTOMER: Vanquish
TYPE: Motor Yacht
TYPE OF WORK: Newbuild
SCOPE OF SUPPLY: Audio-Video



Reliance 19755 (2023)

CUSTOMER: Heesen Yachts
TYPE: Motor Yacht
TYPE OF WORK: Newbuild
SCOPE OF SUPPLY: Engineering / Electrical Installation / Electrical Switchboards / MPA System (AMCS) / Power Management / Light Management / Audio-Video / IT Network



Maximus 3090 (2023)

CUSTOMER: Vitters Shipyards
TYPE: Sailing Yacht
TYPE OF WORK: Newbuild
SCOPE OF SUPPLY: Engineering / Electrical Installation / Electrical Switchboards / MPA System (AMCS) / Power Management / Light Management / Audio-Video / IT Network / NavCom system



Sarissa 404 (2023)

CUSTOMER: Royal Huisman
TYPE: Sailing Yacht
TYPE OF WORK: Newbuild
SCOPE OF SUPPLY: NavCom, GMDSS system, Navigation package, Instruments package, WASSP system, PBX



Nilaya 405 (2023)

CUSTOMER: Royal Huisman
TYPE: Sailing Yacht
TYPE OF WORK: Newbuild
SCOPE OF SUPPLY: NavCom, GMDSS system, Navigation package, Instruments package, Thermal cameras / Audio-Video



Cocoon 201 (2023)

CUSTOMER: Moonen
TYPE: Motor Yacht
TYPE OF WORK: Newbuild
SCOPE OF SUPPLY: NavCom, GMDSS system, Navigation package, IT Network



Midnight Saga (2023)

CUSTOMER: Moonen Yachts
TYPE: Motor Yacht (60m)
TYPE OF WORK: Newbuild
SCOPE OF SUPPLY: Engineering / Electrical Installation / Electrical Switchboards / MPA System (AMCS) / Power Management / Light Management / Audio-Video / IT Network / NavCom system



Amels 60 - Entourage (2023)

CUSTOMER: Damen Yachting
TYPE: Motor Yacht (60 m)
TYPE OF WORK: Newbuild
SCOPE OF SUPPLY: System integration, complete e-installation, energy storage, alarm & monitoring system, NavCom, hybrid propulsion



H3 (2023)

CUSTOMER: Oceanco
TYPE: Motor Yacht (105 m)
TYPE OF WORK: Refit
SCOPE OF SUPPLY: System integration and complete electrical installation, AMCS.



Amels Full Custom – Energy (2022)

CUSTOMER: Damen Yachting
TYPE: Motor Yacht (78m)
TYPE OF WORK: Newbuild
SCOPE OF SUPPLY: E-installation, NavCom, systems integration, alarm & monitoring system



Botti 200 (2022)

CUSTOMER: Moonen
TYPE: Motor Yacht
TYPE OF WORK: Newbuild
SCOPE OF SUPPLY: Engineering / Electrical Installation / Electrical Switchboards / MPA System (AMCS) / Power Management / Light Management / Audio-Video / IT Network / NavCom system



Amels 60 – Come Together (2022)

CUSTOMER: Damen Yachting
TYPE: Motor Yacht (60m)
TYPE OF WORK: Newbuild
SCOPE OF SUPPLY: System integration, complete e-installation, energy storage, AVIT, alarm & monitoring system, NavCom, hybrid propulsion



Lusine (2022)

CUSTOMER: Heesen Yachts
TYPE: Motor Yacht
TYPE OF WORK: Newbuild
SCOPE OF SUPPLY: Engineering / Electrical Installation / Electrical Switchboards / MPA System (AMCS) / Power Management / Light Management



OceanZ (2022)

CUSTOMER: Heesen Yachts
TYPE: Motor Yacht
TYPE OF WORK: Newbuild
SCOPE OF SUPPLY: Engineering / Electrical Installation / Electrical Switchboards / MPA System (AMCS) / Power Management / Light Management / Audio-Video / IT Network / NavCom system



Moskito 19255 (2021)

CUSTOMER: Heesen Yachts
TYPE: Motor Yacht
TYPE OF WORK: Newbuild
SCOPE OF SUPPLY: Engineering / Electrical Installation / Electrical Switchboards / MPA System (AMCS) / Power Management / Light Management / Audio-Video / IT Network



Project Phi 403 (2021)

CUSTOMER: Royal Huisman
TYPE: Motor Yacht
TYPE OF WORK: Newbuild
SCOPE OF SUPPLY: NavCom, GMDSS system, Navigation package, UHF network, Forward looking Sonar, Thermal cameras



ELA 19550 (2021)

CUSTOMER: HeesenYachts
TYPE: Motor Yacht
TYPE OF WORK: Newbuild
SCOPE OF SUPPLY: NavCom, GMDSS system, Navigation package



Perseverance (2021)

CUSTOMER: Baltic Yachts
TYPE: Sailing Yacht
TYPE OF WORK: Newbuild
SCOPE OF SUPPLY: NavCom, GMDSS system, Navigation package



Aquamarine 18950 (2021)

CUSTOMER: HeesenYachts
TYPE: Motor Yacht
TYPE OF WORK: Newbuild
SCOPE OF SUPPLY: NavCom, GMDSS system, Navigation package



K2 (2020)

CUSTOMER: Pendennis
TYPE: Sailing Yacht (39.4 m)
TYPE OF WORK: Newbuild
SCOPE OF SUPPLY: System, Switchboards, AMCS and Battery charge



Out of the Blue (2020)

CUSTOMER: Sunseeker International
TYPE: Motor Yacht
TYPE OF WORK: Newbuild
SCOPE OF SUPPLY: Engineering / Electrical Switchboards / MPA System (AMCS) / Power Management / Security System



La Datcha (2020)

CUSTOMER: Damen Yachting
TYPE: Expedition Yacht (77 m)
TYPE OF WORK: Newbuild
SCOPE OF SUPPLY: Entertainment system, IT and CCTV system.



Sea Eagle II (2020)

CUSTOMER: Royal Huisman
TYPE: Sailing Yacht (80 m)
TYPE OF WORK: Newbuild
SCOPE OF SUPPLY: Entertainment system and Main switchboard.



Vagrant (2020)

CUSTOMER: Royal Huisman
TYPE: Sailing Yacht (39 m)
TYPE OF WORK: Refit
SCOPE OF SUPPLY: Navigation- and Communication system.



Amels 180 – Halo (2019)

CUSTOMER: Damen Yachting
TYPE: Motor Yacht (55 m)
TYPE OF WORK: Newbuild
SCOPE OF SUPPLY: System integration and complete electrical installation, navigation and communication system, alarm & monitoring system, AVIT system.



Galvas (2019)

CUSTOMER: Heesen Yachts
TYPE: Motor Yacht
TYPE OF WORK: Newbuild
SCOPE OF SUPPLY: Engineering / Electrical Installation / Electrical Switchboards / MPA System (AMCS) / Power Management / Light Management



Amels 180 – Nomad (2019)

CUSTOMER: Damen Yachting
TYPE: Motor Yacht (55 m)
TYPE OF WORK: Newbuild
SCOPE OF SUPPLY: System integration and complete electrical installation, navigation and communication system, alarm & monitoring system, AVIT system.



Amels 212 – Neninka (2019)

CUSTOMER: Damen Yachting
TYPE: Motor Yacht (67 m)
TYPE OF WORK: Newbuild
SCOPE OF SUPPLY: Navigation and communication system.



Amels 180 – PAPA (2019)

CUSTOMER: Damen Yachting
TYPE: Motor Yacht (55 m)
TYPE OF WORK: Newbuild
SCOPE OF SUPPLY: System integration and complete electrical installation, navigation and communication system, alarm & monitoring system, AVIT system.



Shōdan (2019)

CUSTOMER: Oceanco
TYPE: Motor Yacht (90m)
TYPE OF WORK: Newbuild
SCOPE OF SUPPLY: Systems integration and complete electrical installation, AMCS.



Amels 200 – Volpini 2 (2018)

CUSTOMER: Damen Yachting
TYPE: Motor Yacht (58 m)
TYPE OF WORK: Newbuild
SCOPE OF SUPPLY: System integration, complete electrical installation, hybrid systems and navigation and communication system.



Elysium (2018)

CUSTOMER: Sunseeker International
TYPE: Motor Yacht
TYPE OF WORK: Newbuild
SCOPE OF SUPPLY: Engineering / Electrical Switchboards / MPA System (AMCS) / Power Management / Security System.



Bravo Eugenia (2018)

CUSTOMER: Oceanco
TYPE: Motor Yacht (109 m)
TYPE OF WORK: Newbuild
SCOPE OF SUPPLY: System integration and complete electrical installation, IT systems, hybrid system, AMCS.



Luna (2018)

CUSTOMER: Oceanco
TYPE: Motor Yacht (90 m)
TYPE OF WORK: Newbuild
SCOPE OF SUPPLY: System integration and complete electrical installation, IT systems, AMCS.



Black Pearl (2018)

CUSTOMER: Oceanco
TYPE: Sailing Yacht (106.7 m)
TYPE OF WORK: Newbuild
SCOPE OF SUPPLY: System integration and complete electrical installation, hybrid system.



Barbara (2017)

CUSTOMER: Oceanco
TYPE: Motor Yacht (88.5m)
TYPE OF WORK: Newbuild
SCOPE OF SUPPLY: Systems integration and complete electrical installation, IT systems and navigation and communication systems, AMCS



Kaos (2017)

CUSTOMER: Oceanco
TYPE: Motor yacht (110 m)
TYPE OF WORK: Newbuild
SCOPE OF SUPPLY: System integration and complete electrical installation, IT systems and navigation and communication system.



Amels 180 - Driftwood (2017)

CUSTOMER: Damen Yachting
TYPE: Motor Yacht (55 m)
TYPE OF WORK: Newbuild
SCOPE OF SUPPLY: System integration and complete electrical installation, navigation and communication system, alarm & monitoring system, AVIT system.



Delta One (2017)

CUSTOMER: Mulder Shipyard
TYPE: Motor Yacht
TYPE OF WORK: Newbuild
SCOPE OF SUPPLY: Engineering / Electrical Installation / Electrical Switchboards / MPA System (AMCS) / Power Management / Light Management.



BookEnds (2017)

CUSTOMER: Heesen Yachts
TYPE: Motor yacht (110 m)
TYPE OF WORK: Newbuild
SCOPE OF SUPPLY: Engineering / Electrical Installation / Electrical Switchboards / MPA System (AMCS) / Power Management / Light Management.



Princess AVK (2016)

CUSTOMER: Sunseeker International
TYPE: Motor yacht
TYPE OF WORK: Newbuild
SCOPE OF SUPPLY: Engineering / Electrical Switchboards / MPA System (AMCS) / Power Management / Security System



Amore Mio (2016)

CUSTOMER: Heesen Yachts
TYPE: Motor yacht
TYPE OF WORK: Newbuild
SCOPE OF SUPPLY: Engineering / Electrical Installation / Electrical Switchboards / MPA System (AMCS) / Power Management / Light Management.



Bijoux (2016)

CUSTOMER: Moonen Yachts
TYPE: Motor Yacht
TYPE OF WORK: Newbuild
SCOPE OF SUPPLY: Engineering / Electrical Installation / Electrical Switchboards / MPA System (AMCS) / Power Management



Rescue Gear Ship 9316 (2025)

CUSTOMER: Damen Naval
TYPE: Rescue SubMarine Vessel
TYPE OF WORK: Newbuild
SCOPE OF SUPPLY: Full package of electric and alarm/monitoring system



Support Squadron Merchant Vessel (2025)

CUSTOMER: Damen Naval
TYPE: Rescue Gear Ship
TYPE OF WORK: Newbuild
SCOPE OF SUPPLY: Full package of electric and alarm/monitoring system



PNS YAMAMA (2025) PNS Hunain (2024)

CUSTOMER: Damen Naval
TYPE: Offshore Patrol Vessel (OPV)
TYPE OF WORK: Newbuild
SCOPE OF SUPPLY: Design, engineering, installation and commissioning of all electrical systems and equipment



PNS YAMAMA (2025) (toevoegen aan referentie zusterschip HUNAIN, 2024) (2024)

CUSTOMER: Damen Naval
TYPE: Patrol vessel
TYPE OF WORK: Conversion
SCOPE OF SUPPLY: E-package: engineering, supervision of installing, commissioning



KNS Shupavu (2024)

CUSTOMER: Damen Naval
TYPE: Patrol vessel
TYPE OF WORK: Conversion
SCOPE OF SUPPLY: E-package: engineering, supervision of installing, commissioning



Stan Patrol 5009 (2x) (2023)

CUSTOMER: Damen Naval
TYPE: Stan Patrol 5009
TYPE OF WORK: Newbuild
SCOPE OF SUPPLY: E-package, engineering, installing, commissioning



OPV's (2023)

CUSTOMER: Damen Naval
TYPE: Ocean Patrol Vessel
TYPE OF WORK: Newbuild
SCOPE OF SUPPLY: E-package



Nuyina, YN 417000 (2021)

CUSTOMER: Damen Naval
TYPE: ASRV Icebreaker, Research vessel (160 m)
TYPE OF WORK: Newbuild
SCOPE OF SUPPLY: Electrical Engineering and Integration, Equipment delivery, Supply and Installation of loose equipment and cables.



N.R.P. Bartolomeu Dias (F333) and N.R.P. Don Francisco de Almeida (F334) (2021)

CUSTOMER: Damen Naval
TYPE: Multipurpose (M) frigates
TYPE OF WORK: Mid-life upgrade
SCOPE OF SUPPLY: Design, construction, assembly and commissioning of the multi-function consoles, the auxiliary control units of the command center (CoCe) and a completely new Radio Room Console (RRC)



PNS Yarmook (2020)

CUSTOMER: Damen Naval
TYPE: Offshore Patrol Vessel 1900 (90 m)
TYPE OF WORK: Newbuild
SCOPE OF SUPPLY: Electrical package delivery. Engineering, installing, commissioning and supervision.



PNS Tabuk (2020)

CUSTOMER: Damen Naval
TYPE: Offshore Patrol Vessel 1900 (90 m)
TYPE OF WORK: Newbuild
SCOPE OF SUPPLY: Electrical package delivery. Engineering, installing, commissioning and supervision.



ARM Benito Juárez (2020)

CUSTOMER: Damen Naval
TYPE: Long Range Oceanic Patrol Vessel (107.5 m)
TYPE OF WORK: Newbuild
SCOPE OF SUPPLY: Complete electrical systems integration, installing, supervising on site and commissioning.



Zr.Ms. Pelikaan (2020)

CUSTOMER: Damen Naval
TYPE: Naval Auxiliary Vessel (65 m)
TYPE OF WORK: Refit
SCOPE OF SUPPLY: Mid-Life upgrade and maintenance.



Zr.Ms. Snellius (2020)

CUSTOMER: R+S
TYPE: Hydrografic Research Vessel (80 m)
TYPE OF WORK: Refit
SCOPE OF SUPPLY: Modifications PABX.



Zr.Ms. Luymes (2020)

CUSTOMER: R+S
TYPE: Hydrografic Research Vessel (80 m)
TYPE OF WORK: Refit
SCOPE OF SUPPLY: Modifications PABX.



Zr.Ms. Rotterdam (2019)

CUSTOMER: DMI
TYPE: Landing Platform Dock (166 m)
TYPE OF WORK: Refit
SCOPE OF SUPPLY: Modification electric installation hospital.



KNS Shujaa (2018)

CUSTOMER: Damen Naval
TYPE: Research Vessel (60 m)
TYPE OF WORK: Refit
SCOPE OF SUPPLY: Life time extension. Electrical Installation and Nautical System.



KRI Raden Eddy Martadinata (2017)

CUSTOMER: Damen Naval
TYPE: Guided-missile Frigate (105.1 m)
TYPE OF WORK: Newbuild
SCOPE OF SUPPLY: Engineering and integration of platform system, materials and equipment/system delivery, installing of cable and set to work activities.



KRI | Gusti Ngurah Rai (2017)

CUSTOMER: Damen Naval
TYPE: Guided-missile Frigate (105.1 m)
TYPE OF WORK: Newbuild
SCOPE OF SUPPLY: Engineering and integration of platform system, materials and equipment/system delivery, installing of cable and set to work activities.



Arialah/OPV 6711 UAE (2016)

CUSTOMER: Damen Naval
TYPE: Offshore Patrol Vessel (67 m)
TYPE OF WORK: Newbuild
SCOPE OF SUPPLY: Electrical package delivery. Engineering, installing and commissioning.



Hmeem/OPV 6711 UAE (2016)

CUSTOMER: Damen Naval
TYPE: Offshore Patrol Vessel (67 m)
TYPE OF WORK: Newbuild
SCOPE OF SUPPLY: Electrical package delivery. Engineering, installing and commissioning.



Belgica (2016)

CUSTOMER: Damen Naval
TYPE: Research Vessel (50.9 m)
TYPE OF WORK: Refit
SCOPE OF SUPPLY: Life time extension. Electrical Installation.



Stan Patrol 5509 (2015)

CUSTOMER: Damen Naval
TYPE: Patrol vessel (55 m)
TYPE OF WORK: Newbuild
SCOPE OF SUPPLY: Electrical package delivery. Engineering, installing and commissioning.



Zr.Ms. Karel Doorman (2015)

CUSTOMER: Damen Naval
TYPE: Joint Logistic Support Ship (204.7 m)
TYPE OF WORK: Newbuild
SCOPE OF SUPPLY: Installation of the electrical systems including command & control, PDU and production of 44 consoles.



Zr.Ms. Zeeland (2013)

CUSTOMER: Damen Naval
TYPE: Ocean-going Patrol Vessel (108.4 m)
TYPE OF WORK: Newbuild
SCOPE OF SUPPLY: Complete electrical systems integration, installing, supervising on site and commissioning.



Zr.Ms. Holland (2012)

CUSTOMER: Damen Naval
TYPE: Ocean-going Patrol Vessel (108.4 m)
TYPE OF WORK: Newbuild
SCOPE OF SUPPLY: Complete electrical systems integration, installing, supervising on site and commissioning.



Zr.Ms. Groningen (2013)

CUSTOMER: Damen Naval
TYPE: Ocean-going Patrol Vessel (108.4 m)
TYPE OF WORK: Newbuild
SCOPE OF SUPPLY: Complete electrical systems integration, installing, supervising on site and commissioning.



Zr.Ms. Friesland (2013)

CUSTOMER: Damen Naval
TYPE: Ocean-going Patrol Vessel (108.4 m)
TYPE OF WORK: Newbuild
SCOPE OF SUPPLY: Complete electrical systems integration, installing, supervising on site and commissioning.



Tristao Da Cunha (2025)

CUSTOMER: Jan de Nul
TYPE: Trailing Suction Hopper Dredger
TYPE OF WORK: Refit
SCOPE OF SUPPLY: Renew and supply Alarm and Monitoring System (AMS)



Afonso De Albuquerque (2025)

CUSTOMER: Jan de Nul
TYPE: Trailing Suction Hopper Dredger
TYPE OF WORK: Refit
SCOPE OF SUPPLY: Renew and supply Alarm and Monitoring System (AMS)



Diogo Cao (2025)

CUSTOMER: Jan de Nul
TYPE: Trailing Suction Hopper Dredger
TYPE OF WORK: Refit
SCOPE OF SUPPLY: Renew and supply Alarm and Monitoring System (AMS)



Beagle 4 (2024)

CUSTOMER: Royal IHC
TYPE: Trailing Suction Hopper Dredger
TYPE OF WORK: Newbuild
SCOPE OF SUPPLY: System integration, complete electrical installation and navigation & communication systems Installation



Artevelde (2023)

CUSTOMER: DEME
TYPE: Trailing Suction Hopper Dredger
TYPE OF WORK: Refit
SCOPE OF SUPPLY: Alewijnse Virtualisation and Visualization solution ALViVi



Juan Sebastián de Elcano (2023)

CUSTOMER: Jan de Nul
TYPE: Hopper Dredger (16500 m³)
TYPE OF WORK: Refit
SCOPE OF SUPPLY: Renew and supply the Alarm and Monitoring System (AMS), Dredge Control System (DCS), Alewijnse Draught and Loading System (ADLS) and the Alewijnse Suction Tube System (ASTS).



Kaishuu (2023)

CUSTOMER: Jan de Nul
TYPE: Hopper Dredger (16500 m³)
TYPE OF WORK: Refit
SCOPE OF SUPPLY: Renew and supply the Alarm and Monitoring System (AMS), Dredge Control System (DCS), Alewijnse Draught and Loading System (ADLS) and the Alewijnse Suction Tube System (ASTS).



Kaliwaal 41 (2022)

CUSTOMER: Van Nieuwpoort Groep
TYPE: Floating sand processing installation
TYPE OF WORK: Refit
SCOPE OF SUPPLY: Upgrades to the automation applications and electrical installations.



Liberty Island (2022)

CUSTOMER: Great Lakes Dredge & Dock Co
TYPE: Trailing Suction Hopper Dredger (96 m)
TYPE OF WORK: Refit
SCOPE OF SUPPLY: New Dredge Control System (DCS) with intuitive HMI operating philosophy including the solutions Alewijnse Draught and Loading System (ADLS) and Alewijnse Suction Tube System (ASTS).



Krakesandt (2022)

CUSTOMER: Barkmeijer Shipyards B.V.
TYPE: Trailing Suction Hopper Dredger (105.9 m)
TYPE OF WORK: Newbuild
SCOPE OF SUPPLY: Engineering, installation and commissioning of complete electrical installation, including alarm, monitoring and control systems and Dredge Control System



Francis Beaufort (2021-2022)

CUSTOMER: Jan de Nul
TYPE: Hopper Dredger (11300 m³)
TYPE OF WORK: Refit
SCOPE OF SUPPLY: Renew and supply the Alarm and Monitoring System (AMS), Dredge Control System (DCS), Alewijnse Draught and Loading System (ADLS) and the Alewijnse Suction Tube System (ASTS).



Filippo Brunelleschi (2021-2022)

CUSTOMER: Jan de Nul
TYPE: Hopper Dredger (11300 m³)
TYPE OF WORK: Refit
SCOPE OF SUPPLY: Renew and supply the Alarm and Monitoring System (AMS), Dredge Control System (DCS), Alewijnse Draught and Loading System (ADLS) and the Alewijnse Suction Tube System (ASTS).



Swalinge (2021-2022)

CUSTOMER: Swalinge Scheepvaart
TYPE: Trailing Suction Hopper Dredger
TYPE OF WORK: Lengthening of vessel
SCOPE OF SUPPLY: Complete electrical outfitting for the lengthening, upgrade several systems, maintenance of several systems.



Cemex Go Innovation, YN 563351 (2021)

CUSTOMER: Damen Shipyards Group
TYPE: Marine Agregate Dredger 3500 (103 m)
TYPE OF WORK: Newbuild
SCOPE OF SUPPLY: Complete electrical engineering, cables & equipment delivery, complete installing and commissioning works for PTO/PTI machines, power management and power distribution system, alarm monitoring and control system, dredging control system, fire detection system, lighting system, motor starters, etc.



Hanson Thames, YN 563352 (2021)

CUSTOMER: Damen Shipyards Group
TYPE: Marine Agregate Dredger 3500 (103 m)
TYPE OF WORK: Newbuild
SCOPE OF SUPPLY: Complete electrical engineering, cables & equipment delivery, complete installing and commissioning works for shaft generators, power management and power distribution system, alarm monitoring and control system, dredging control system, fire detection system, motor starters, etc.



Makran 1&2, YN1301/02 (2021)

CUSTOMER: IHC BV Holland, Neptune Shipyard
TYPE: 2 x Trailing Suction Hopper Dredger 4000 (87.25 m)
TYPE OF WORK: Newbuild
SCOPE OF SUPPLY: Engineering, Panels Building (MSBs & Auxiliary Distributions), Installing, Commissioning of electrical installation, Delivery of equipment incl. Alarm System and several other E-Systems.



Mohab Mameesh & Hussein Tantawy, YN 1299-1300 (2021)

CUSTOMER: IHC BV Holland, Krimpen
TYPE: 2 x Cutter Suction Dredger 23.8MW (147.4 m)
TYPE OF WORK: Newbuild
SCOPE OF SUPPLY: Engineering, Panels Building (MSBs & Auxiliary Distributions), Installing, Commissioning of electrical installation, Delivery of equipment incl. Alarm System and several other E-Systems.



Breydel (2021)

CUSTOMER: DEME
TYPE: Trailing Suction Hopper Dredger (125.50m)
TYPE OF WORK: Refit
SCOPE OF SUPPLY: Automation Systems



Anchorage (2020)

CUSTOMER: Thecla Bodewes Shipyards
TYPE: Trailing Suction Hopper Dredger (3000 m³)
TYPE OF WORK: Newbuild
SCOPE OF SUPPLY: Engineering, installation and commissioning of complete electrical installation, including alarm, monitoring and control systems and Dredge Control System.



Reynaert (2020)

CUSTOMER: DEME
TYPE: Trailing Suction Hopper Dredger (5580 m³)
TYPE OF WORK: Refit
SCOPE OF SUPPLY: Automation Systems, Dredge Control System (DCS), Draught and Loading System (ADLS), Alewijnse Suction Tube System (ASTS).



Uilenspiegel (2020)

CUSTOMER: DEME
TYPE: Trailing Suction Hopper Dredger (13700 m³)
TYPE OF WORK: Refit
SCOPE OF SUPPLY: Automation Systems, Draught and Loading System (ADLS), Alewijnse Suction Tube System (ASTS).



Mellina (2019)

CUSTOMER: DEME
TYPE: Trailing Suction Hopper Dredger (3300 m³)
TYPE OF WORK: Refit
SCOPE OF SUPPLY: Alewijnse Draught and Loading System (ADLS), Alewijnse Suction Tube System (ASTS).



Nile River (2019)

CUSTOMER: DEME
TYPE: Trailing Suction Hopper Dredger (17000 m³)
TYPE OF WORK: Refit
SCOPE OF SUPPLY: Vessel Automation (AMS; PLC & SCADA Refit).



Brabo (2019)

CUSTOMER: DEME
TYPE: Trailing Suction Hopper Dredger (11650 m³)
TYPE OF WORK: Refit
SCOPE OF SUPPLY: Automation Systems.



Al-Idrisi (2019)

CUSTOMER: Jan de Nul
TYPE: Hopper Dredger (7500 m³)
TYPE OF WORK: Refit
SCOPE OF SUPPLY: Renewals on AMCS.



Breughel (2019)

CUSTOMER: DEME
TYPE: Trailing Suction Hopper Dredger (11796 m³)
TYPE OF WORK: Refit
SCOPE OF SUPPLY: Automation Systems.



Lange Wapper (2019)

CUSTOMER: DEME
TYPE: Trailing Suction Hopper Dredger (13700 m³)
TYPE OF WORK: Refit
SCOPE OF SUPPLY: Automation Systems, Draught and Loading System (ADLS), Alewijnse Suction Tube System (ASTS).



Samuel de Champlain (2018)

CUSTOMER: Damen Shipyards Group
TYPE: Trailing Suction Hopper Dredger (8500 m³)
TYPE OF WORK: Refit
SCOPE OF SUPPLY: Conversion to dual fuel. Power Management System (PMS) and IAS.



Marieke (2018)

CUSTOMER: DEME
TYPE: Trailing Suction Hopper Dredger (5600 m³)
TYPE OF WORK: Refit
SCOPE OF SUPPLY: Automation Systems, Draught and Loading System (ADLS), AMCS.



Vitus Bering (2018)

CUSTOMER: Jan de Nul
TYPE: Hopper Dredger (7500 m³)
TYPE OF WORK: Refit
SCOPE OF SUPPLY: PC renewal AMCS + Refit DCS.



Spauwer (2017)

CUSTOMER: Den Herder Seaworks
TYPE: Trailing Suction Hopper Dredger (7450 m³)
TYPE OF WORK: Newbuild
SCOPE OF SUPPLY: Complete Electrical Installation; System Integration; AMCS.



Charlock (2016)

CUSTOMER: Barkmeijer Stroobos BV
TYPE: Trailing Suction Hopper Dredger (3500 m³)
TYPE OF WORK: Newbuild
SCOPE OF SUPPLY: Delivery, outfitting, Engineering, installation and commissioning of electrical package and automation.



Fishery control vessel KN390 (2025)

CUSTOMER: Damen Shipyards Group
TYPE: Coast guard vessel
TYPE OF WORK: Newbuild
SCOPE OF SUPPLY: Full package of electric and alarm/monitoring system



Hydrocat 60 (2025)

CUSTOMER: Dok en Scheepsbouw Woudsend
TYPE: Crew Transfer Vessel
TYPE OF WORK: Newbuild
SCOPE OF SUPPLY: Engineering, installation and commissioning of complete electrical installation, including alarm, monitoring and control systems, power management system, electrical distribution systems.



Windcat 58 (2025)

CUSTOMER: Neptune Marine
TYPE: Crew Transfer Vessel
TYPE OF WORK: Newbuild
SCOPE OF SUPPLY: Engineering, installation and commissioning of complete electrical installation, including alarm, monitoring and control systems, power management system, electrical distribution systems.



KNRM Van Wijk Class (2025)

CUSTOMER: Dok en Scheepsbouw Woudsend
TYPE: Search & Rescue Vessel
TYPE OF WORK: Newbuild
SCOPE OF SUPPLY: Engineering, installation and commissioning of complete electrical installation, including alarm, monitoring and control systems.



Windcat 59 (2025)

CUSTOMER: Neptune Marine
TYPE: Crew Transfer Vessel
TYPE OF WORK: Newbuild
SCOPE OF SUPPLY: Engineering, installation and commissioning of complete electrical installation, including alarm, monitoring and control systems, power management system, electrical distribution systems.



Mare - Mees - Maud - Milo (2025)

CUSTOMER: Next Generation Shipyards
TYPE: High Speed Tender
TYPE OF WORK: Newbuild
SCOPE OF SUPPLY: Engineering, installation and commissioning of complete electrical installation, including alarm, monitoring and control systems, power management system, electrical distribution systems.



Fugro Pioneer (2025)

CUSTOMER: Fugro
TYPE: Research & Survey Vessel
TYPE OF WORK: Refit
SCOPE OF SUPPLY: Engineering, installation and commissioning of all electrical and automation modifications required for the vessel's conversion to methanol fuel, including delivery Alarm, Monitoring & Control System (AMCS)



Fugro Voyager (2025)

CUSTOMER: Fugro
TYPE: Research & Survey Vessel
TYPE OF WORK: Refit
SCOPE OF SUPPLY: System integration, engineering and commissioning of all electrical and automation modifications required for the vessel's hybrid conversion, including delivery of electrical propulsion and Alarm, Monitoring & Control System (AMCS)



FCS2710 YN 532926-29/32/33 (2024)

CUSTOMER: Damen Shipyards Group
TYPE: Fast Crew Supplier 2710 (27m)
TYPE OF WORK: Newbuild
SCOPE OF SUPPLY: Switchboard package



OceanXplorer (2023)

CUSTOMER: Damen Shipyards Group
TYPE: Oceanographic Survey Vessel (85.3 m)
TYPE OF WORK: Refit
SCOPE OF SUPPLY: Electrical outfitting, update DP (dp 2), upgrade bridge system, farsounder, panels, shore connection, lighting system (lutron/pharos), pulling and terminating 205km cables.



DEME Sea Installer (2023)

CUSTOMER: Huisman Equipment
TYPE: Jack-up vessel
TYPE OF WORK: Conversion
SCOPE OF SUPPLY: Installation 1,600mt Leg Encircling Crane (LEC)



BOSKALIS Bokalift 2 (2023)

CUSTOMER: Huisman Equipment
TYPE: Crane ship
TYPE OF WORK: Conversion
SCOPE OF SUPPLY: Installation Motion Compensated Pile Gripper



Modular Dry Dock MFDd21036 (2023)

CUSTOMER: Damen Shipyards Group
TYPE: Modular Dry Dock (81 m)
TYPE OF WORK: Newbuild
SCOPE OF SUPPLY: Infrastructure (cable routing, cable trays), switchboards and consoles



Amazon (2022)

CUSTOMER: IHC and McDermol
TYPE: Pipe Laying Vessel (199m)
TYPE OF WORK: Refit
SCOPE OF SUPPLY: Installation of all electric cabling for complete refit.



Aqua Helix (2022)

CUSTOMER: Damen Shipyards Group
TYPE: FCS2710, FCS3307 (2025) Supplier 7011
TYPE OF WORK: Newbuild
SCOPE OF SUPPLY: Engineering, Panel and material delivery, Set to work



Benguela Gem, YN 594001 (2021)

CUSTOMER: Damen Shipyards Group
TYPE: Offshore diamond recovery vessel (176.5 m)
TYPE OF WORK: Newbuild
SCOPE OF SUPPLY: Supply and installation of loose equipment and cables.



Pioneering Spirit (2020)

CUSTOMER: Allseas
TYPE: Pipe Layer (382 m)
TYPE OF WORK: Service
SCOPE OF SUPPLY: Switchboards.



Fortitude (2020)

CUSTOMER: Allseas
TYPE: Offshore Construction Vessel (150 m)
TYPE OF WORK: Service
SCOPE OF SUPPLY: Automation window heating system.



Jumbo Javelin (2020)

CUSTOMER: Jumbo Maritime
TYPE: Heavy Load Carrier (144 m)
TYPE OF WORK: Service
SCOPE OF SUPPLY: Engineering, production of additional distribution for 6 additional generators. Including modifications to AMCS and PMS.



Jumbo Jubilee (2019)

CUSTOMER: Jumbo Maritime
TYPE: Heavy Load Carrier (145 m)
TYPE OF WORK: Service
SCOPE OF SUPPLY: Power distribution system.



Fairpartner (2019)

CUSTOMER: Jumbo Maritime
TYPE: Heavy Load Carrier (143.1 m)
TYPE OF WORK: Service
SCOPE OF SUPPLY: Refit AMCS, (network, PLC, SCADA).



Bibby Wavemaster (2019)

CUSTOMER: Damen Shipyards Group
TYPE: Service Operation Vessel (89.65 m)
TYPE OF WORK: Newbuild
SCOPE OF SUPPLY: System Integration, complete electrical installation.



Apollo (2019)

CUSTOMER: DEME
TYPE: Jack-Up Vessel (89 m)
TYPE OF WORK: Newbuild
SCOPE OF SUPPLY: Vessel management system comprising power management, tank sounding, draught & loading system (ADLS) and secondary systems; KVM matrix solution for high level integrated bridges; installation helideck; ATEX inspection.



Living Stone (2018)

CUSTOMER: DEME
TYPE: Cable Layer (161 m)
TYPE OF WORK: Refit
SCOPE OF SUPPLY: Infrastructure (cable routing, cable trays).



Modular Dry Dock 8026-4 (2017)

CUSTOMER: Damen Shipyards Group
TYPE: Modular Dry Dock (81 m)
TYPE OF WORK: Newbuild
SCOPE OF SUPPLY: Infrastructure (cable routing, cable trays), switchboards and consoles.



Fugro Venturer (2017)

CUSTOMER: Fugro
TYPE: Research & Survey vessel (72 m)
TYPE OF WORK: Newbuild
SCOPE OF SUPPLY: System integration, vessel automation, power distribution system; navigation and communication system, consoles.



Maersk Connector (2016)

CUSTOMER: Damen Shipyards Group
TYPE: Cable Layer (138 m)
TYPE OF WORK: Newbuild
SCOPE OF SUPPLY: System Integration, complete electrical installation; alarm, monitoring and control system; power distribution system.



Sapura Jade (2016)

CUSTOMER: IHC Offshore & Marine
TYPE: Pipe Laying Support Vessel (145.9 m)
TYPE OF WORK: Newbuild
SCOPE OF SUPPLY: System Integration, complete electrical installation.



Sapura Rubi (2016)

CUSTOMER: IHC Offshore & Marine
TYPE: Pipe Laying Support Vessel (145 m)
TYPE OF WORK: Newbuild
SCOPE OF SUPPLY: System Integration, complete electrical installation.



Sapura Onix (2015)

CUSTOMER: IHC Offshore & Marine
TYPE: Pipe Laying Support Vessel (145 m)
TYPE OF WORK: Newbuild
SCOPE OF SUPPLY: System Integration, complete electrical installation.



Seawell (2015)

CUSTOMER: Damen Shipyards Group
TYPE: Multi Support Vessel (111.4 m)
TYPE OF WORK: Refit
SCOPE OF SUPPLY: Vessel automation, power distribution system, infrastructure (cable routing, cable trays), power management system, switchboards.



Nexus (2014)

CUSTOMER: Damen Shipyards Group
TYPE: Cable Layer (122.63 m)
TYPE OF WORK: Newbuild
SCOPE OF SUPPLY: System Integration, complete electrical installation.



Rowan Viking (2014)

CUSTOMER: Damen Shipyards Group
TYPE: Jack-Up Vessel (80 m)
TYPE OF WORK: Refit
SCOPE OF SUPPLY: Extension of legs including upgrade.



OOS Prometheus (2013)

CUSTOMER: OOS
TYPE: Semi submersible accommodation platform (119 m)
TYPE OF WORK: Service
SCOPE OF SUPPLY: Modifications to navigation and communication system.



Atlantic London (2013)

CUSTOMER: AMS
TYPE: Accommodation Jack-Up Platform (94 m)
TYPE OF WORK: Refit
SCOPE OF SUPPLY: Conversion to accommodation platform.



Atlantic Amsterdam (2013)

CUSTOMER: AMS
TYPE: Accommodation Jack-Up Platform (84 m)
TYPE OF WORK: Refit
SCOPE OF SUPPLY: Conversion to accommodation platform.



OOS Gretha (2013)

CUSTOMER: OOS
TYPE: Semi submersible crane vessel (137 m)
TYPE OF WORK: Service
SCOPE OF SUPPLY: Modifications to navigation and communication system.



Atlantic Labrador (2012)

CUSTOMER: AMS
TYPE: Accommodation Jack-Up Platform (74 m)
TYPE OF WORK: Refit
SCOPE OF SUPPLY: Conversion to accommodation platform.



Agile (2011)

CUSTOMER: McDermott
TYPE: Pipe layer (142 m)
TYPE OF WORK: Refit
SCOPE OF SUPPLY: Conversion to pipe-lay vessel.



Dry cargo vessel (2026)

CUSTOMER: HANDELSKADE
TYPE: 5,000 DWT Multi-Purpose Dry Cargo Ship
TYPE OF WORK: Newbuild
SCOPE OF SUPPLY: Engineering and switchboards, AMS, Consoles



CF3850 (2024)

CUSTOMER: Damen Shipyards Group
TYPE: Combi freighter
TYPE OF WORK: Newbuild
SCOPE OF SUPPLY: E-package, engineering, commissioning



Arklow (2024)

CUSTOMER: Ferus Smit
TYPE: General Cargo Vessel 5.100 DWT
TYPE OF WORK: Newbuild
SCOPE OF SUPPLY: Complete electrical installation, automation systems, switchboards and consoles.



TM Dream 1 & 2 (2024)

CUSTOMER: Dong Bac shipbuilding company
TYPE: bulk carrier 65,000DWT
TYPE OF WORK: Newbuild
SCOPE OF SUPPLY: Engineering all switchboards, switchboards package & AMS.



VB65- 1 & 2 (2024)

CUSTOMER: Dong Bac shipbuilding company
TYPE: bulk carrier 65,000DWT
TYPE OF WORK: Newbuild
SCOPE OF SUPPLY: Engineering all switchboards, switchboards package & AMS.



Anemos and Artemis (2024)

CUSTOMER: Chantiers Piriou - Concarneau, France
TYPE: Sailing cargo vessels
TYPE OF WORK: Newbuild
SCOPE OF SUPPLY: Complete electrical package, including engineering, installation works, commissioning, alarm systems, monitoring & control systems and a battery supported hybrid propulsion system.



GasChem Shinano, Mosel, Leda, Rhone, Werra, Balti, Atlanti, Arcti, Caribic (2021)

CUSTOMER: Severnav Shipyard
TYPE: 6500 m³ liquified gas tanker and 8600 m³ gas tankers
TYPE OF WORK: Newbuild
SCOPE OF SUPPLY: Complete electrical package, including engineering, commissioning, alarm, monitoring and control systems.



Optimus YN 559014 (2021)

CUSTOMER: Damen Shipyards Group
TYPE: Liquefied Gas Carrier (LGC) 6000 LNG s, Bunkering vessel (100 m)
TYPE OF WORK: Newbuild
SCOPE OF SUPPLY: Electrical Engineering and Integration, Equipment delivery, Supply and supervising of loose equipment and cables, Commissioning.



Sophie & Benabell G. YN 559012-13 (2021)

CUSTOMER: Damen Shipyards Group
TYPE: Combi Freighter 3850 - multipurpose carriers (90 m)
TYPE OF WORK: Newbuild
SCOPE OF SUPPLY: Complete electrical engineering, cables & equipment delivery and commissioning works for: power generation and power distribution system, motor starters, alarm monitoring and control system, fire detection system, public address system, telephone system, etc.



Atlantic Titan - Fishing trawler 30m (2019)

CUSTOMER: Shipbuilding Asia
TYPE: Fishing trawler 30m
TYPE OF WORK: Newbuild
SCOPE OF SUPPLY: Engineering e-system, cables routing, cables, switchboards package & AMS.



Tuna purse seiner 67m - C345 (2019)

CUSTOMER: Piriou France
TYPE: Tuna vessel (67m)
TYPE OF WORK: Newbuild
SCOPE OF SUPPLY: Main Switchboard



Maaike and Linda (2018)

CUSTOMER: Damen Shipyards Group
TYPE: 8.000 m³ oil tankers
TYPE OF WORK: Newbuild
SCOPE OF SUPPLY: Engineering, installation and commissioning of complete electrical installation, alarm, monitoring and control systems, electrical distribution systems.



Stolt Waal, Main, Maas, Mosel, Rhine and Merwede (2018)

CUSTOMER: Various shipyards
TYPE: Inland tanker
TYPE OF WORK: Newbuild
SCOPE OF SUPPLY: Newbuild and service & maintenance of electrical installations.



Coralius (2017)

CUSTOMER: Royal Bodewes
TYPE: LNG-Tanker
TYPE OF WORK: Newbuild
SCOPE OF SUPPLY: Engineering, installation and commissioning of complete electrical installation, including emergency shutdown system, alarm, monitoring and control systems, power management system, electrical distribution systems, drives.



Cymbidium (2017)

CUSTOMER: Royal Bodewes
TYPE: Cement Carrier (103 m)
TYPE OF WORK: Newbuild
SCOPE OF SUPPLY: Complete electrical installation, automation systems, switchboards and consoles.



Essberger vessels: Lisa, Lucy, Caroline, Ursula, Anneliese and Wilhelmine (2016)

CUSTOMER: Various shipyards
TYPE: Chemical sea tankers
TYPE OF WORK: Newbuild
SCOPE OF SUPPLY: Service.



Energia I (2015)

CUSTOMER: Damen Shipyards Group
TYPE: stan tanker 5412
TYPE OF WORK: Newbuild
SCOPE OF SUPPLY: Complete electrical package (engineering, installing, commissioning, alarm, monitoring and control systems, internal communication systems, CCTV system).



Aqua Pollux (2025)

CUSTOMER: Damen Shipyards Group
TYPE: RSD Tug 2513 Electric
TYPE OF WORK: Newbuild
SCOPE OF SUPPLY: Switchboards and consoles delivery



ASD Tug 2312, ASD Tug 2111 and RSD Tug 2513 (2025)

CUSTOMER: Damen Shipyards Group
TYPE: ASD Tug 2312, ASD Tug 2111 and RSD Tug 2513
TYPE OF WORK: Newbuild
SCOPE OF SUPPLY: Switchboards and consoles delivery



FCS 2710 and FCS 3307 (2025)

CUSTOMER: Damen Shipyards Group
TYPE: Fast crew suppliers
TYPE OF WORK: Newbuild
SCOPE OF SUPPLY: Engineering and switchboard package



ASD Tug 2111 (2024)

CUSTOMER: Damen Shipyards Group
TYPE: ASD Tug 2111
TYPE OF WORK: Newbuild
SCOPE OF SUPPLY: Switchboard package & consoles



ASD Tug 2312 (2024)

CUSTOMER: Damen Shipyards Group
TYPE: ASD Tug 2312
TYPE OF WORK: Newbuild
SCOPE OF SUPPLY: Switchboard package & consoles



RSD Tug 2513 (2024)

CUSTOMER: Damen Shipyards Group
TYPE: RSD Tug 2513
TYPE OF WORK: Newbuild
SCOPE OF SUPPLY: Switchboard package & consoles



ASD Tug 2811 (2023)

CUSTOMER: Damen Shipyards Group
TYPE: ASD Tug 2811
TYPE OF WORK: Newbuild
SCOPE OF SUPPLY: Switchboard package & consoles



ASD Tug 3010 ICE (2023)

CUSTOMER: Damen Shipyards Group
TYPE: ASD Tug 3010 ICE
TYPE OF WORK: Newbuild
SCOPE OF SUPPLY: Cables, out fitting materials, switchboard package & consoles consoles



ASD Tug 3413 ICE (2021)

CUSTOMER: Damen Shipyards Group
TYPE: Tug 3413 ICE
TYPE OF WORK: Newbuild
SCOPE OF SUPPLY: Switchboards



C352/C353 (2019)

CUSTOMER: Piriou Vietnam
TYPE: Tugboat (31 m)
TYPE OF WORK: Newbuild
SCOPE OF SUPPLY: Switchboards



ASD Tug 2810 (2019)

CUSTOMER: Damen Shipyards Group
TYPE: ASD Tug 2810
TYPE OF WORK: Newbuild
SCOPE OF SUPPLY: Infrastructure (Cable Routing, Cable Trays), Switchboards and Consoles.



ATD Tug 2412 (2019)

CUSTOMER: Damen Shipyards Group
TYPE: ATD Tug 4212
TYPE OF WORK: Newbuild
SCOPE OF SUPPLY: Infrastructure (Cable Routing, Cable Trays), Switchboards and Consoles.



ASD Tug 2810 Hybrid (2018)

CUSTOMER: Damen Shipyards Group
TYPE: ASD Tug 2810 hybrid
TYPE OF WORK: Newbuild
SCOPE OF SUPPLY: Infrastructure (Cable Routing, Cable Trays), Switchboards and Consoles.



ASD Tug 2810 Hybrid (2018)

CUSTOMER: Damen Shipyards Group
TYPE: ASD Tug 2810 hybrid
TYPE OF WORK: Newbuild
SCOPE OF SUPPLY: Infrastructure (Cable Routing, Cable Trays), Switchboards and Consoles.



ASD Tug 2810 Hybrid (2018)

CUSTOMER: Damen Shipyards Group
TYPE: ASD Tug 2810 hybrid
TYPE OF WORK: Newbuild
SCOPE OF SUPPLY: Infrastructure (Cable Routing, Cable Trays), Switchboards and Consoles.



Geothermal plant Delft (2026)

CUSTOMER: Geothermie Delft
TYPE: Geothermal plant
TYPE OF WORK: Newbuild
SCOPE OF SUPPLY: Control of the geothermal installation: automation and electrical installation



Electrical boiler solutions (2026)

CUSTOMER: HKB Boiler Solutions
TYPE: Electrical boiler installation: power drive
TYPE OF WORK: Newbuild
SCOPE OF SUPPLY: Panelbuilding for the electrical installation



Electrical panels for vegetable oil plant (2026)

CUSTOMER: Bunge
TYPE: 60 electrical switchboards
TYPE OF WORK: Newbuild
SCOPE OF SUPPLY: Production of switchboards



Sustainable water ecosystem for Vitens Overijssel (2026)

CUSTOMER: Salverda Bouw
TYPE: New wells in Boerhaar and renovation of production site in Diepenveen
TYPE OF WORK: Renovation
SCOPE OF SUPPLY: Automation and electrical installation of control systems



Ringnetwork Warmtecombinatie Luttelgeest (2025)

CUSTOMER: Warmte Combinatie Luttelgeest
TYPE: Energy platform
TYPE OF WORK: Newbuild
SCOPE OF SUPPLY: Design, hardware and software engineering, panel building, installation and commissioning of complete automation system



Two pedestrian bridges (2025)

CUSTOMER: Tebezo / municipality of Zeewolde
TYPE: Electric pedestrian bridges
TYPE OF WORK: Newbuild & Refit
SCOPE OF SUPPLY: All electrical propulsion and automation



Hauzer coating machines

CUSTOMER: IHI Hauzer Techno Coating BV.
TYPE: Electric and control panels for coating machines
TYPE OF WORK: Newbuild
SCOPE OF SUPPLY: Panel building and testing



Energy Hub TPN West (2024)

CUSTOMER: DAR-EKI-EMR
TYPE: Grid congestion consultancy
TYPE OF WORK: New construction
SCOPE OF SUPPLY: Financial and technical feasibility study



Extra Send Out (ESO) project (2024)

CUSTOMER: GATE Terminal
TYPE: Construction of an additional high-pressure cryogenic pump and open evaporator
TYPE OF WORK: Newbuild
SCOPE OF SUPPLY: Electrical installation in an ATEX environment



Electrical integration of photovoltaic (PV) system (2024)

CUSTOMER: Ardagh Metal Packaging
TYPE: Electrical integration of 10,000 solar panels
TYPE OF WORK: Newbuild
SCOPE OF SUPPLY: Consultancy and electrical installation



OOC Terminals (2024)

CUSTOMER: OOC Terminals
TYPE: Extension of electrical power supply
TYPE OF WORK: Expansion
SCOPE OF SUPPLY: Advies en elektrische installatie



Geothermal transfer plant for Trias (2023)

CUSTOMER: VB Geo Projects / Trias Westland
TYPE: Sustainable heat transfer installation
TYPE OF WORK: Extension
SCOPE OF SUPPLY: Automation and electrical installation of all control systems



Additional feed T. Boer (2023)

CUSTOMER: T. Boer & Zn.
TYPE: Extension of cooling capacity
TYPE OF WORK: Extension
SCOPE OF SUPPLY: Consultancy and electrical installation



Oasen CO innovation (2023)

CUSTOMER: Oasen
TYPE: CO tanks and mixing and dosing equipment
TYPE OF WORK: Expansion
SCOPE OF SUPPLY: Automation and electrical installation of all control systems



Niacet dry powder plant (2022)

CUSTOMER: Niacet Tiel
TYPE: Production of organic salts
TYPE OF WORK: Renovation
SCOPE OF SUPPLY: Upgrade automation of all control systems



Air handling system EKRO (2022)

CUSTOMER: EKRO
TYPE: Air handling installation
TYPE OF WORK: Renovation
SCOPE OF SUPPLY: Automation and electrical installation of all control systems



Clean water reservoir Wapenveld Vitens (2021)

CUSTOMER: Construction company H. van Haarst
TYPE: Construction of new clean water reservoir
TYPE OF WORK: Newbuild
SCOPE OF SUPPLY: Automation and electrical installation of all control systems

